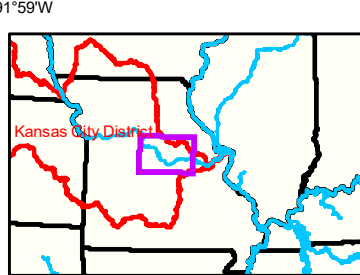


DISCLAIMER: The U.S. Army Corps of Engineers (USACE) provides this information as a service to the public. It is not intended to be used for any purpose other than that for which it was prepared. The USACE makes no warranty, express or implied, regarding the accuracy, reliability, or completeness of the information. The user assumes all liability for any use of the information. The USACE is not responsible for any errors or omissions in this information. The USACE is not liable for any damages, including consequential damages, arising from the use of this information. The USACE is not responsible for any actions taken by the user based on this information. The USACE is not responsible for any actions taken by the user based on this information.

KANSAS CITY DISTRICT MISSOURI RIVER AREA OFFICE	
Submitted By:	MIRA/O
Reviewed By:	MIRA/O
Checked By:	MIRA/O

Survey Information

MO_02_LMR
MO_02_LMR_20210504_CS_132_0_133_5_SORT
04 May 2021



LEGEND

< 8	< 8 ft	Green Passing	Green	AIS Green CAN
8 - 9	8 - 9 ft	Red Passing	Red	AIS Red NUN
9 - 9.5	9 - 10 ft	Green Crossing	Green CAN	Red NUN
9.5 - 10	10 - 12 ft	Red Crossing	Junction	
10 - 12	River Mile			
12 - 14	Sailing Line			
14 - 16	BSNP Structure			
> 16	Levee			

Buoy

AIS Green CAN
 AIS Red NUN
 Green CAN
 Red NUN

Scale: 0 312.5 625 937.5 1,250 2,500 Feet

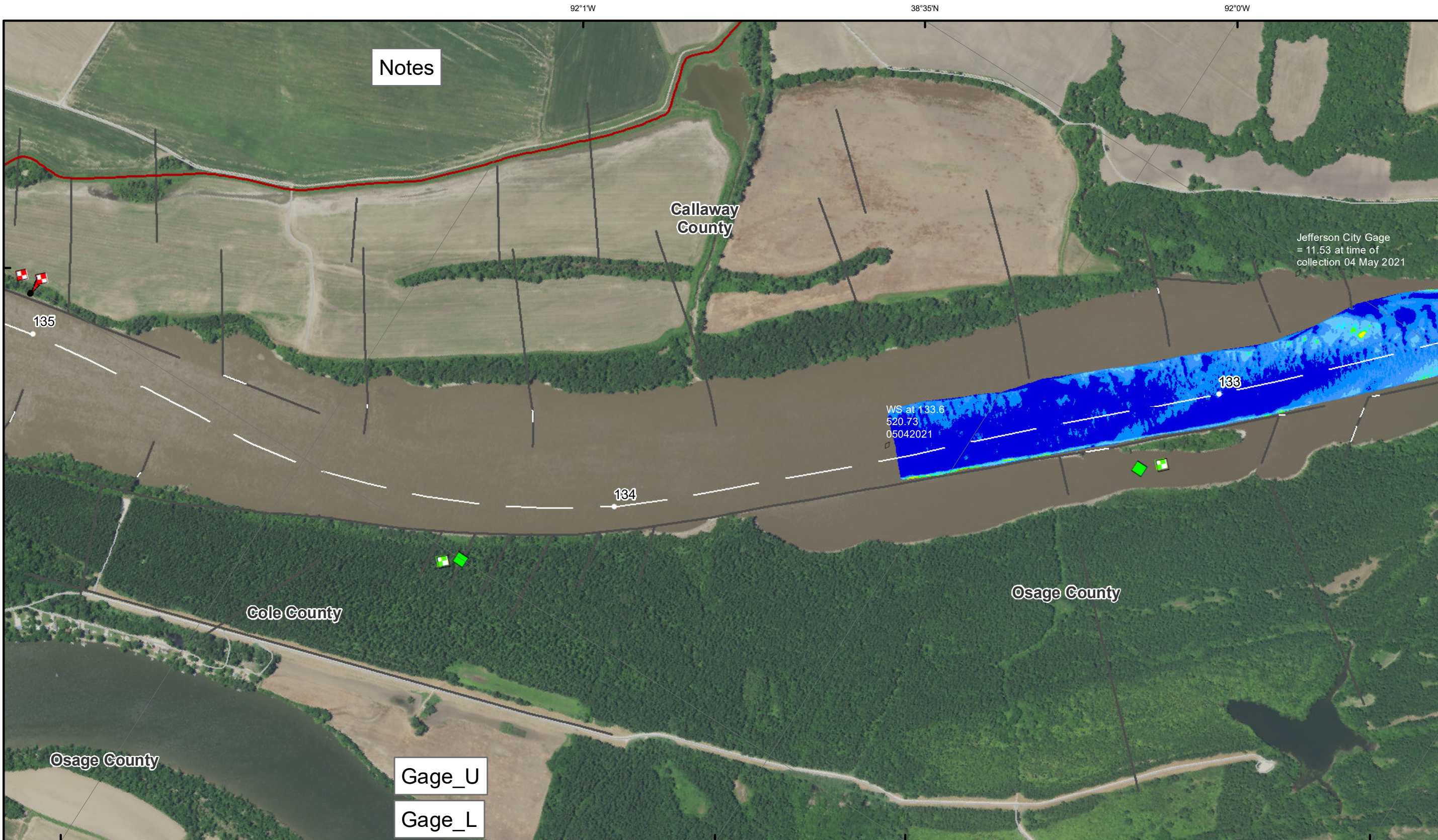
NOTES:
Horizontal Coordinate System:
World Geodetic System of 1984 (WGS84), projected to the Universal Transverse Mercator (UTM) Zone 15 North. Distance units in U.S. Survey Feet

Vertical Datum:
Soundings are shown in feet and indicated depths are referenced to water surface at time of collection.

The information depicted on this map represents the results of a survey conducted on the date indicated and can only be considered to represent the general condition existing at that time.

The location of navigation aids are based on and provided by the U.S. Coast Guard.

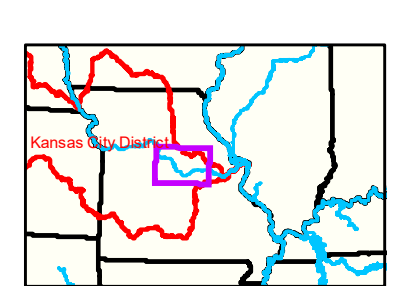
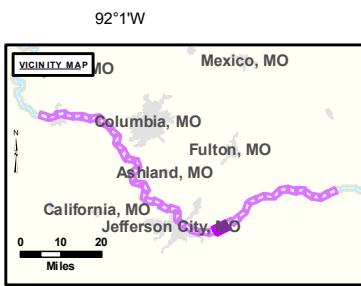
Sheet Number
15 of 46



DISCLAIMER: The U.S. Army Corps of Engineers (USACE) provides this information as a service to the public. It is not intended to be used for any purpose other than that for which it was intended. The USACE makes no warranty, express or implied, as to the accuracy, reliability, or completeness of the information. The user assumes all liability for any use of the information. The USACE is not responsible for any damage or loss resulting from the use of this information. The USACE is not responsible for any damage or loss resulting from the use of this information.

KANSAS CITY DISTRICT MISSOURI RIVER AREA OFFICE	
Submitted By:	MIRAO
Reviewed By:	MIRAO
Approved By:	MIRAO

Survey Information
 MO_02_LMR
 MO_02_LMR_20210504_CS_132_0_133_5_SORT
 04 May 2021



LEGEND

< 8	< 8 ft	Green Passing	Green	AIS Green CAN
8 - 9	8 - 9 ft	Red Passing	Red	AIS Red NUN
9 - 9.5	9 - 10 ft	Green Crossing	Green CAN	Red NUN
9.5 - 10	10 - 12 ft	Red Crossing	Junction	
10 - 12	River Mile			
12 - 14	Sailing Line			
14 - 16	BSNP Structure			
> 16	Levee			

Buoy

AIS Green CAN
 AIS Red NUN
 Green CAN
 Red NUN

NOTES:
 Horizontal Coordinate System:
 World Geodetic System of 1984 (WGS84), projected to the Universal Transverse Mercator (UTM) Zone 15 North. Distance units in U.S. Survey Feet.
 Vertical Datum:
 Soundings are shown in feet and indicated depths are referenced to water surface at time of collection.
 The information depicted on this map represents the results of a survey conducted on the date indicated and can only be considered to represent the general condition existing at that time.
 The location of navigation aids are based on and provided by the U.S. Coast Guard.

0 312.5 625 937.5 1,250 2,500 Feet

Sheet Number
 16 of 46